



ALLJoist[®]

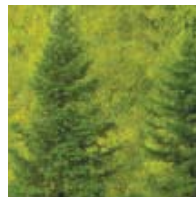
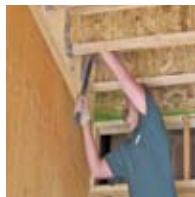
Introducing a new
solid sawn flange series –
the AJS[®] 30



2x4 flange
Available in depths 18" to 24"
Exceeds the properties and spans of the PRI-90

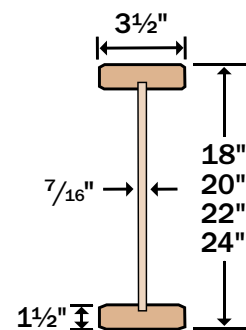
US Version

The information in this document pertains to use in the UNITED STATES ONLY, Allowable Stress Design. Refer to the ALLJOIST Specifier Guide Canada for use in Canada, Limit States Design.



Special Order

AJS[®] 30



Boise Cascade
Engineered Wood Products

08/24/09

AJS® Joist Series	Depth [inches]	Weight [plf]	Moment [ft-lbs]	EI x 10 ⁶ [lb-in ²]	K x 10 ⁶ [lbs]	Shear [lbs]	End Reaction [lbs]				Intermediate Reaction [lbs]			
							1½" Bearing		3½" Bearing		3½" Bearing		5¼" Bearing	
							No WS ⁽¹⁾	WS ⁽²⁾	No WS ⁽¹⁾	WS ⁽²⁾	No WS ⁽¹⁾	WS ⁽²⁾	No WS ⁽¹⁾	WS ⁽²⁾
AJS® 30	18	4.6	13905	1575	12.3	3010	N/A ⁽³⁾	2240	N/A ⁽³⁾	2620	N/A ⁽³⁾	4720	N/A ⁽³⁾	4720
	20	4.9	15540	1998	13.7	3240	N/A ⁽³⁾	2490	N/A ⁽³⁾	2980	N/A ⁽³⁾	5110	N/A ⁽³⁾	5110
	22	5.1	17040	2477	15.0	3470	N/A ⁽³⁾	2490	N/A ⁽³⁾	3150	N/A ⁽³⁾	5230	N/A ⁽³⁾	5505
	24	5.4	18525	3012	16.5	3690	N/A ⁽³⁾	2490	N/A ⁽³⁾	3320	N/A ⁽³⁾	5345	N/A ⁽³⁾	5900

NOTES:

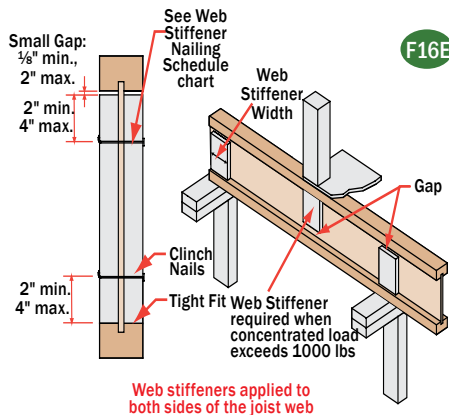
- (1) No web stiffeners required.
- (2) Web stiffeners required.
- (3) Not applicable, web stiffeners required.
- Moment, shear and reaction values based upon a load duration of 100% and may be adjusted for other load durations.
- Design values listed are applicable for Allowable Stress Design (ASD).
- No additional repetitive member increase allowed.

$$\Delta = \frac{5wl^4}{384EI} + \frac{wl^2}{K}$$

Δ = deflection [in]
 w = uniform load [lb/in]
 l = clear span [in]
 EI = bending stiffness [lb-in²]
 K = shear deformation coefficient [lb]

BUILDING CODE EVALUATION REPORT
 - ICC ESR 1144 (IBC, IRC)

Web Stiffener Requirements



Web Stiffener Nailing Schedule		
ALLJOIST® Series	Joist Depth	Nailing
AJS® 30	18" – 24"	5-10d

- NOTES**
- Web stiffeners are always required for 18" and deeper AJS® joists at all bearing locations.
 - Web stiffeners are always required in hangers that do not extend up to support the top flange of the AJS® Joist. Web stiffeners may be required with certain sloped or skewed hangers or to achieve uplift values. Refer to the hanger manufacturer's installation requirements.
 - Web stiffeners are always required in certain roof applications, see AJS® Installation Guide for further details.
 - Web stiffeners are always required under concentrated loads that exceed 1000 pounds. Install the web stiffeners snug to the top flange in this situation. Follow the nailing schedule for intermediate bearings.

Web Stiffener Size			
Series	Minimum Thickness		Minimum Width
	In Hanger	No Hanger	
AJS® 30	2x4 lumber (vertical)		

Allowable Uniform Floor Load (in pounds per linear foot [PLF])

100% Load Duration

Span Length	AJS® 30 Series 3½" Flange Width							
	18" AJS® 30		20" AJS® 30		22" AJS® 30		24" AJS® 30	
	Live Load	Total Load	Live Load	Total Load	Live Load	Total Load	Live Load	Total Load
10	-	377	-	408	-	418	-	427
11	-	343	-	371	-	380	-	388
12	-	314	-	340	-	348	-	356
13	-	290	-	314	-	321	-	328
14	-	269	-	292	-	298	-	305
15	-	251	-	272	-	278	-	285
16	-	236	-	255	-	261	-	267
17	-	222	-	240	-	246	-	251
18	-	209	-	227	-	232	-	237
19	-	198	-	215	-	220	-	225
20	186	188	-	204	-	209	-	213
21	163	179	-	194	-	199	-	203
22	144	171	179	185	-	190	-	194
23	127	164	159	177	-	181	-	185
24	113	157	141	170	172	174	-	178
25	100	151	126	163	154	167	-	171
26	90	145	113	157	138	160	-	164
27	81	139	101	151	124	154	149	158
28	73	134	92	146	112	149	135	152
29	66	130	83	140	102	144	122	147
30	60	120	75	136	92	139	111	142
32	50	100	62	121	77	130	93	133
34	42	84	52	105	65	117	78	125
36			44	89	55	105	66	114
38					47	94	57	102

- Total Load values are limited by shear, moment, or deflection equal to L/240.
- Live Load values are limited by deflection equal to L/480. For deflection limits of L/360 and L/960, multiply the Live Load values by 1.33 and 0.50 respectively.
- Both the Total Load and Live Load columns must be checked. Where a Live Load value is not shown, the Total Load value will control.
- Table values apply to either simple or multiple span joists. Span is measured center to center of the minimum required bearing length. Analyze multiple span joists with the BC CALC® software if the length of any span is less than half the length of an adjacent span.
- Table values do not consider composite action from gluing and nailing floor sheathing.
- Total load values assume minimum bearing lengths with web stiffeners.
- This table was designed to apply to a broad range of applications. It may be possible to exceed the limitations of this table by analyzing a specific application with the BC CALC® software.

Joist Series	Joist Depth	Residential Floor Multi-Family Dwellings Hotels - Private Rooms				Office Buildings – Office Area			
		40 psf Live Load / 25 psf Dead Load				50 psf Live Load + 15 psf Partition Load / 25 psf Dead Load & 2000 lb Concentrated Load			
		L/480 Live Load Deflection Limit				L/600 Live Load Deflection Limit at 50 psf Live Load L/360 Live Load Deflection Limit at 65 psf Live Load			
		12" o.c.	16" o.c.	19.2" o.c.	24" o.c.	12" o.c.	16" o.c.	19.2" o.c.	24" o.c.
AJS® 30	18"	35'-6"	32'-4"	30'-6"	28'-5"	30'-4"	27'-8"	26'-0"	20'-10"
	20"	38'-5"	35'-0"	33'-0"	30'-9"	32'-11"	29'-11"	28'-2"	22'-7"
	22"	41'-3"	37'-7"	35'-5"	32'-1"	35'-4"	32'-2"	28'-11"	23'-1"
	24"	44'-0"	40'-1"	37'-7"	32'-9"	37'-9"	34'-4"	29'-7"	23'-7"

Joist Series	Joist Depth	Office Buildings - Lobbies & Corridors Hotels - Public Rooms & Corridors				Warehouse - Light Storage			
		100 psf Live Load / 25 psf Dead Load & 2000 lb Concentrated Load				125 psf Live Load / 25 psf Dead Load			
		L/600 Live Load Deflection Limit at 50 psf Live Load L/360 Live Load Deflection at 100 psf Live Load				L/600 Live Load Deflection Limit at 50 psf Live Load L/360 Live Load Deflection Limit at 125 psf Live Load			
		12" o.c.	16" o.c.	19.2" o.c.	24" o.c.	12" o.c.	16" o.c.	19.2" o.c.	24" o.c.
AJS® 30	18"	28'-6"	22'-6"	18'-9"	15'-0"	25'-0"	18'-9"	15'-7"	12'-5"
	20"	30'-10"	24'-5"	20'-4"	16'-3"	27'-1"	20'-4"	16'-11"	13'-6"
	22"	32'-11"	25'-0"	20'-10"	16'-7"	27'-9"	20'-9"	17'-3"	13'-10"
	24"	34'-1"	25'-6"	21'-3"	17'-0"	28'-4"	21'-3"	17'-8"	14'-1"

NOTES

- Spans limited by allowable moment and reaction values, total load deflection of L/240 and live load deflections noted. No other floor performance limits have been imposed. Floor performance should be considered in the design, contact Boise EWP Engineering for further information.
- Table values assume that $2\frac{3}{32}$ " min. plywood/OSB rated sheathing is glued and nailed to joists.
- Table values represent the most restrictive of simple or multiple span applications.
- Table values are the maximum allowable clear distance between supports.
- Table values assume minimum bearing lengths with web stiffeners at each bearing.
- Live loads based upon Table 1607.1 of 2006 International Building Code.
- Floor covering such as tile may require more restrictive deflection limits, contact Boise EWP Engineering for further information.
- This table was designed to apply to a broad range of applications. It may be possible to exceed the limitations of this table by analyzing a specific application with the BC CALC® sizing software.

Deflection Criteria for Commercial Floors

The minimum deflection criterion for commercial floors is the same as for residential floors, L/360 for live load deflection and L/240 for total load deflection. Since deflection controls a significant amount of I-joist designs, an additional deflection limit has been considered in the development of the AJS® joist span tables shown in this guide. In addition to the minimum limits at full uniform and concentrated ("safe") live loads, deflection is limited to L/600 with a uniform live load of 50 psf in those tables where the code specified uniform live load is 50 psf or greater. As is the case with all joist designs, floor performance should always be considered by the design professional of record in each specific condition.

Additional floor framing details available with BC FRAMER® software

END BEARING DETAILS

F07

Nail Boise Rimboard to AJS® Joists with 8d nail into each flange. Dimension lumber is not suitable for use as rim board with AJS® Joists.

F07A

Dimension lumber is not suitable for use as rim board with AJS® Joists.

F02

AJS® rim joist. Minimum 2x6 wall for proper bearing support.

F01

AJS® blocking.

F27A

Top Flange or Face Mount Joist Hanger. VERSA-LAM®.

F52

One 8d nail each side at bearing. 1 1/2" minimum bearing length. To limit splitting flange, start nails at least 1 1/2" from end. Nails may need to be driven at an angle to limit splitting of bearing plate.

F08

Solid block all posts from above to bearing below.

F03

AJS® rim joist. Minimum 2x6 wall for proper bearing support. Note: AJS® floor joist must be designed to carry wall above when not stacked over wall below.

INTERMEDIATE BEARING DETAILS

F06

For load bearing wall above (stacked over wall below). AJS® Joist blocking.

F09

Blocking may be required, consult design professional of record and/or local building official. Load bearing wall above (stacked over wall below). 1/16" gap. 2x block.

F15D Connection on Steel Beam

Sill plate to be properly anchored to steel beam. Steel beam.

F10

Backer block (minimum 12" wide). Nail with 10-10d nails. Joist Hanger. Filler block. Nail with 10-10d nails. Backer block required where top flange joist hanger load exceeds 250 lbs. Install tight to top flange.

F58

Double AJS® Joist Connection. Filler Block (see chart below). Web-Filler Nailing 12" on-center. Connection valid for all applications. Contact Boise EWP Engineering for specific conditions.

F05

Sheathing or rimboard closure. AJS® blocking required for cantilever.

F15E Connection with Hanger on Steel Beam

Sill plate to be properly anchored to steel beam. Steel beam. Backer block optional.

Size	Double Squash Block Vertical Load [lb/ft]			
	12	16	19.2	24
2x4	4463	3347	2789	2231
2x6	7013	5259	4383	3506

- Squash blocks are to be in full contact with upper floor and lower wall plate.
- Capacities shown are for a double squash blocks at each joist, SPF or better.

BACKER AND FILLER BLOCK DIMENSIONS

Series	Backer Block Thickness	Filler Block Thickness
AJS® 30	2 x _ lumber	Double 2 x __ lumber

- Cut backer and filler blocks to a maximum depth equal to the web depth minus 1/4" to avoid a forced fit.
- For deeper AJS® 30 Joists, stack 2x lumber or use multiple pieces of 3/4" wood panels.

AJS® RIM JOISTS AND BLOCKING

Joist Depth	Vertical Load Transfer Capacity (plf)
18" - 20"	3200 ⁽¹⁾
22" - 24"	2700 ⁽¹⁾

- Web stiffeners required at each end of blocking panel. Distance between stiffeners must be less than 24".

WEB STIFFENER REQUIREMENTS

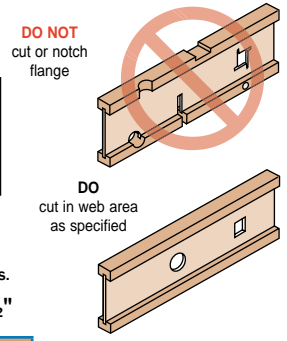
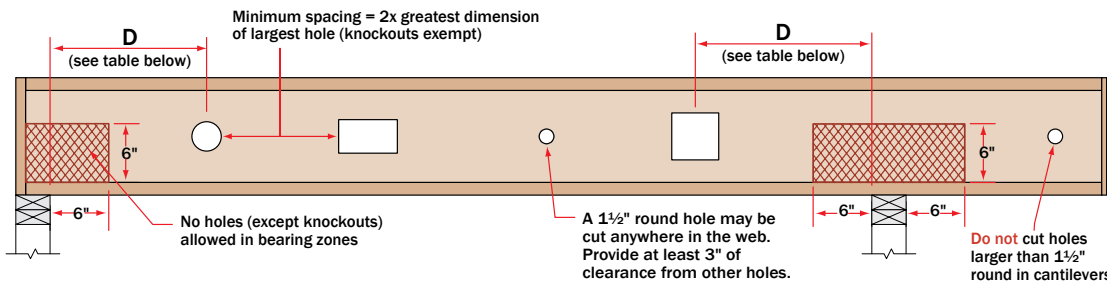
- See *Web Stiffener Requirements* on page 2.

PROTECT AJS® JOISTS FROM THE WEATHER

- AJS® Joists is intended only for applications that provide permanent protection from the weather. Bundles of product should be covered and stored off of the ground on stickers.

AJS® Joist Hole Location & Sizing

AJS® Joists are manufactured with 1½" round perforated knockouts in the web at approximately 12" on center

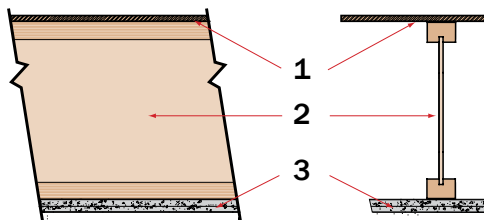


Minimum distance from support, listed in table below, is required for all holes greater than 1½"

MINIMUM DISTANCE (D) FROM ANY SUPPORT TO THE CENTERLINE OF THE HOLE																
Round Hole Diameter [in]	2	3	4	5	6	6½	7	8	8¾	9	10	11	12	13		
Rectangular Hole Side [in]	-	-	-	-	-	-	-	2	3	3	5	6	7	9		
18" AJS® 30	Span [ft]	8	1'-0"	1'-1"	1'-2"	1'-2"	1'-4"	1'-6"	1'-8"	2'-0"	2'-4"	2'-4"	2'-9"	3'-1"	3'-5"	3'-10"
		12	1'-0"	1'-1"	1'-2"	1'-5"	2'-0"	2'-3"	2'-6"	3'-0"	3'-6"	3'-7"	4'-1"	4'-8"	5'-2"	5'-9"
		16	1'-0"	1'-1"	1'-3"	1'-11"	2'-8"	3'-0"	3'-4"	4'-1"	4'-8"	4'-9"	5'-6"	6'-3"	6'-11"	7'-8"
		20	1'-0"	1'-1"	1'-6"	2'-5"	3'-4"	3'-9"	4'-2"	5'-1"	5'-10"	6'-0"	6'-11"	7'-9"	8'-8"	9'-7"
		24	1'-0"	1'-1"	1'-10"	2'-11"	4'-0"	4'-6"	5'-1"	6'-1"	7'-1"	7'-2"	8'-3"	9'-4"	10'-5"	11'-6"
		28	1'-0"	1'-1"	2'-2"	3'-5"	4'-8"	5'-3"	5'-11"	7'-2"	8'-3"	8'-5"	9'-8"	10'-11"	12'-2"	13'-5"
20" AJS® 30	Span [ft]	8	1'-0"	1'-1"	1'-2"	1'-2"	1'-3"	1'-3"	1'-5"	1'-8"	2'-0"	2'-0"	2'-4"	2'-8"	2'-11"	3'-3"
		12	1'-0"	1'-1"	1'-2"	1'-2"	1'-7"	1'-10"	2'-1"	2'-7"	3'-0"	3'-0"	3'-6"	4'-0"	4'-5"	4'-11"
		16	1'-0"	1'-1"	1'-2"	1'-7"	2'-2"	2'-6"	2'-10"	3'-5"	4'-0"	4'-1"	4'-8"	5'-4"	5'-11"	6'-7"
		20	1'-0"	1'-1"	1'-2"	1'-11"	2'-9"	3'-1"	3'-6"	4'-4"	5'-0"	5'-1"	5'-10"	6'-8"	7'-5"	8'-3"
		24	1'-0"	1'-1"	1'-5"	2'-4"	3'-3"	3'-9"	4'-3"	5'-2"	6'-0"	6'-1"	7'-1"	8'-0"	8'-11"	9'-10"
		28	1'-0"	1'-1"	1'-8"	2'-9"	3'-10"	4'-5"	4'-11"	6'-0"	7'-0"	7'-2"	8'-3"	9'-4"	10'-5"	11'-6"
22" AJS® 30	Span [ft]	10	1'-0"	1'-1"	1'-2"	1'-2"	1'-3"	1'-3"	1'-3"	1'-7"	1'-11"	2'-0"	2'-4"	2'-8"	3'-1"	3'-5"
		14	1'-0"	1'-1"	1'-2"	1'-2"	1'-3"	1'-6"	1'-9"	2'-3"	2'-8"	2'-9"	3'-3"	3'-9"	4'-4"	4'-10"
		18	1'-0"	1'-1"	1'-2"	1'-2"	1'-7"	1'-11"	2'-3"	2'-11"	3'-6"	3'-7"	4'-3"	4'-11"	5'-7"	6'-2"
		22	1'-0"	1'-1"	1'-2"	1'-2"	1'-11"	2'-4"	2'-9"	3'-7"	4'-3"	4'-4"	5'-2"	6'-0"	6'-9"	7'-7"
		26	1'-0"	1'-1"	1'-2"	1'-4"	2'-4"	2'-9"	3'-3"	4'-3"	5'-1"	5'-2"	6'-1"	7'-1"	8'-0"	9'-0"
		30	1'-0"	1'-1"	1'-2"	1'-7"	2'-8"	3'-3"	3'-9"	4'-10"	5'-10"	6'-0"	7'-1"	8'-2"	9'-3"	10'-4"
24" AJS® 30	Span [ft]	10	1'-0"	1'-1"	1'-2"	1'-2"	1'-3"	1'-3"	1'-3"	1'-4"	1'-5"	1'-6"	1'-10"	2'-2"	2'-6"	2'-10"
		14	1'-0"	1'-1"	1'-2"	1'-2"	1'-3"	1'-3"	1'-3"	1'-7"	2'-0"	2'-1"	2'-7"	3'-0"	3'-6"	4'-0"
		18	1'-0"	1'-1"	1'-2"	1'-2"	1'-3"	1'-3"	1'-5"	2'-1"	2'-7"	2'-8"	3'-3"	3'-11"	4'-6"	5'-2"
		22	1'-0"	1'-1"	1'-2"	1'-2"	1'-3"	1'-4"	1'-9"	2'-6"	3'-2"	3'-3"	4'-0"	4'-9"	5'-7"	6'-4"
		26	1'-0"	1'-1"	1'-2"	1'-2"	1'-3"	1'-7"	2'-1"	3'-0"	3'-9"	3'-10"	4'-9"	5'-8"	6'-7"	7'-5"
		30	1'-0"	1'-1"	1'-2"	1'-2"	1'-4"	1'-11"	2'-5"	3'-5"	4'-4"	4'-6"	5'-6"	6'-6"	7'-7"	8'-7"

- Select a table row based on joist depth and the actual joist span rounded up to the nearest table span. Scan across the row to the column headed by the appropriate round hole diameter or rectangular hole side. Use the longest side of a rectangular hole. The table value is the closest that the centerline of the hole may be to the centerline of the nearest support.
- The entire web may be cut out. **DO NOT** cut the flanges. Holes apply to either single or multiple joists in repetitive member conditions.
- For multiple holes, the amount of uncut web between holes must equal at least twice the diameter (or longest side) of the largest hole.
- 1½" round knockouts in the web may be removed by using a short piece of metal pipe and hammer.
- Holes may be positioned vertically anywhere in the web. The joist may be set with the 1½" knockout holes turned either up or down.
- This table was designed to apply to the design conditions covered by tables elsewhere in this publication. Use the BC CALC® software to check other hole sizes or holes under other design conditions. It may be possible to exceed the limitations of this table by analyzing a specific application with the BC CALC® software.

One-Hour Floor/Ceiling Assembly



FIRE ASSEMBLY COMPONENTS

1. Min. ¾" tongue-and-groove plywood or 23/32" APA Rated Sheathing (Exposure 1 or exterior glue)
2. AJS® Joists at 24" o.c. or less.
3. Two layers ½" Type C or two layers 5/8" Type X gypsum board
4. When constructed with resilient channels, STC = 50.

American Wood Council - DCA 3

Contact your local Boise EWP representative for specific assembly information and other fire-resistive options.

Allowable Uniform Roof Load (in pounds per linear foot [PLF])

115% and 125% Load Duration

Use of these tables should be limited to roof slopes of 3½" per foot or less.
For steeper slopes, use BC CALC® software.

Span Length	AJSI® 30 Series 3½" Flange Width											
	18" AJS® 30			20" AJS® 30			22" AJS® 30			24" AJS® 30		
	Total Load		Deflect.	Total Load		Deflect.	Total Load		Deflect.	Total Load		Deflect.
	Snow (115%)	Non-Snow (125%)	L/240	Snow (115%)	Non-Snow (125%)	L/240	Snow (115%)	Non-Snow (125%)	L/240	Snow (115%)	Non-Snow (125%)	L/240
6	631	686	-	701	762	-	701	762	-	701	762	-
7	540	588	-	601	653	-	601	653	-	601	653	-
8	473	514	-	526	571	-	526	571	-	526	571	-
9	420	457	-	467	508	-	467	508	-	467	508	-
10	378	411	-	420	457	-	420	457	-	420	457	-
11	344	374	-	382	415	-	382	415	-	382	415	-
12	315	343	-	350	381	-	350	381	-	350	381	-
13	291	316	-	323	351	-	323	351	-	323	351	-
14	270	294	-	300	326	-	300	326	-	300	326	-
15	252	274	-	280	305	-	280	305	-	280	305	-
16	236	257	-	263	285	-	263	285	-	263	285	-
17	222	242	-	247	269	-	247	269	-	247	269	-
18	210	228	-	233	254	-	233	254	-	233	254	-
19	199	216	-	221	240	-	221	240	-	221	240	-
20	189	205	-	210	228	-	210	228	-	210	228	-
21	180	196	-	200	217	-	200	217	-	200	217	-
22	172	187	-	191	207	-	191	207	-	191	207	-
23	164	178	-	183	198	-	183	198	-	183	198	-
24	157	171	-	175	190	-	175	190	-	175	190	-
25	151	164	-	168	183	-	168	183	-	168	183	-
26	145	158	-	161	175	-	161	175	-	161	175	-
27	140	152	-	155	169	-	155	169	-	155	169	-
28	135	147	-	150	163	-	150	163	-	150	163	-
29	130	141	123	145	157	-	145	157	-	145	157	-
30	126	137	111	140	152	-	140	152	-	140	152	-
31	122	132	101	135	147	127	135	147	-	135	147	-
32	118	121	92	131	142	116	131	142	-	131	142	-
33	110	110	84	127	138	106	127	138	-	127	138	-
34	101	101	77	121	128	98	123	134	120	123	134	-
35	93	93	71	114	117	90	120	130	110	120	130	-
36	86	86	65	108	108	83	116	127	102	116	127	-
37	79	79	60	100	100	76	112	121	94	113	123	-
38	73	73	56	92	92	71	106	114	87	110	120	105
39	68	68	52	86	86	65	101	106	81	107	117	98
40	63	63	48	79	79	61	96	98	75	104	113	91

- Total Load values are limited by shear, moment, or deflection equal to L/180.
- Deflection values (Deflect.) are limited by live load deflection equal to L/240. Check the local building code for other deflection limits that may apply.
- Both the Total Load and Deflection columns must be checked. Where a Deflection value is not shown, the Total Load value will control.

- Table values apply to either simple or multiple span joists. Span is measured center to center of the minimum required bearing length. Analyze multiple span joists with the BC CALC® software if the length of any span is less than half the length of an adjacent span.
- Slope roof joists at least ¼ inch over 12 inches to minimize ponding.
- Table values assume minimum bearing lengths with web stiffeners.

- This table was designed to apply to a broad range of applications. It may be possible to exceed the limitations of this table by analyzing a specific application with the BC CALC® software.
- Allowable spans and loads shall be adjusted and checked for wind load as required by local building code.



Boise Cascade has a proven track record of providing quality wood products and a nationwide building materials distribution network for our customers, helping them to enhance their own businesses.

Boise Engineered Wood Products build better homes with stronger, stiffer floors using only wood purchased in compliance with Sustainable Forestry Initiative (SFI) programs. Take a moment to view our green brochure at http://www.bc.com/wood/ewp/Boise_EWP_Green.html.

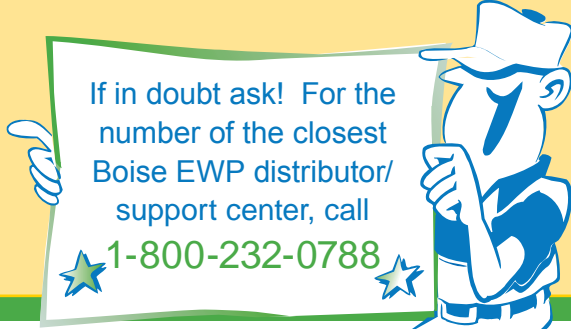
Boise Cascade buys wood fiber in compliance with SFI®, the Sustainable Forestry Initiative®, and is an SFI chain-of-custody certified national supplier. Chain-of-custody tracks and records possession and transfer of wood fiber from forest of origin through all stages of distribution and production to the homebuilder. Chain-of-custody assures that Boise Cascade products are made using fiber from responsibly-managed forests and not from areas that are illegally harvested, major tropical wilderness areas or biodiversity hotspots. Boise Cascade's computerized chain-of-custody system documents sourcing of all wood fiber purchased, ensuring that none gets into Boise Cascade inventory unless it comes from acceptable sources.

Lifetime Guaranteed Quality and Performance

Boise Cascade warrants its BCI® Joist, VERSA-LAM®, and ALLJOIST® products to comply with our specifications, to be free from defects in material and workmanship, and to meet or exceed our performance specifications for the normal and expected life of the structure when correctly stored, installed and used according to our Installation Guide.



SUSTAINABLE FORESTRY INITIATIVE
 Certified Chain of Custody
 Promoting Sustainable Forest Management
www.sfiprogram.org



If in doubt ask! For the number of the closest Boise EWP distributor/support center, call **1-800-232-0788**

BCI, BC CALC, BC COLUMN, BC FRAMER, BC RIM BOARD, BOISE GLULAM, SIMPLE FRAMING SYSTEM, VERSA-LAM, VERSA-RIM, VERSA-STRAND, and VERSA-STUD are trademarks of Boise Cascade, L.L.C. or its affiliates.

The information in this document pertains to use in the UNITED STATES ONLY, Allowable Stress Design. Refer to the ALLJOIST Specifier Guide Canada for use in Canada, Limit States Design.

For information about Boise Engineered Wood Products, including sales terms and conditions, warranties and disclaimers, visit our website at www.BC.com/ewp

Your Dealer is:



Boise Cascade
Engineered Wood Products

Great products are only the beginning.™

If no dealer is listed, call 1-800-232-0788