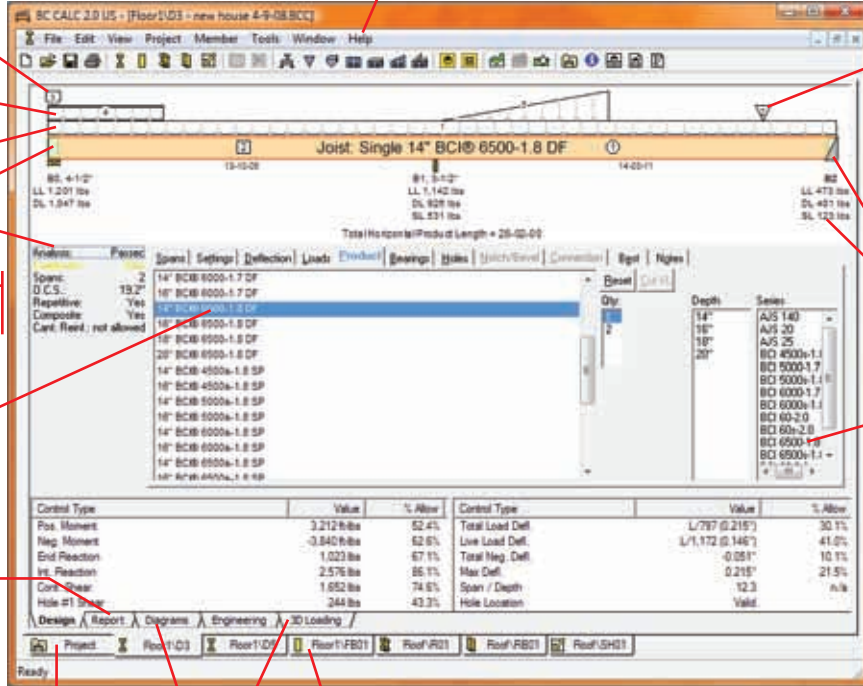




## Design View



Concentrated Linear Load

Uniform Linear Load

Area Load

Web Stiffener

Double-click to Analyze

General Data: Double-click to edit values

Double-click to select product and Analyze member

Analyze and View Report

Need assistance? The Help menu is the best place to start.

Point Load

Member Diagram: Right-click objects for relevant menus. Hover cursor over objects for tooltips

Hanger

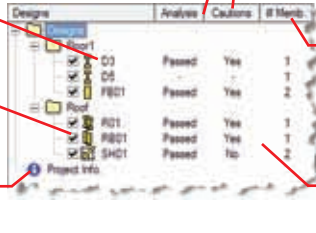
Right-click to Copy Reaction, Right-click again on other design Member Diagram to Paste the Point Load

Filter product list in the selection window to the left

Analysis results: Failures are in **RED**

NOTE: You can modify the window layout with View > Adjust Design View Layout

## Project Manager



Double-click to open design

Uncheck to hide a design's tab

Click to edit Project Info text displayed in Report header

Drag border to resize column

Drag label to move column

NEW Diagrams and 3D Loading tabs

Right-click on a label to show/hide columns

Right-click anywhere to access folder and design menu

## Commands

- New Ctrl+N
- Open... Ctrl+O
- Save Ctrl+S
- Print... (Reports/Summary) Ctrl+P
- Help F1
- Add Axial Load F2
- Add Left/Right Point Load F3
- Add Left/Right Linear Load F4
- Add Front/Back Point Load F5
- Add Front/Back Linear Load F6
- Create New Folder
- Delete
- Add Loads
- Point Load F7
- Concentrated Linear Load F8
- Uniform Linear Load F9
- Uniform Area Load F10
- Trapezoidal Linear Load F11
- Partition Area Load F12
- Circular Hole
- Rectangular Hole
- 3D Load Data View Ctrl+L
- Diagrams View Ctrl+H
- Analyze Member Ctrl+M
- Analyze All Members Ctrl+A
- Run Best Analysis Ctrl+B
- Project Window
- Project Info
- Design View Ctrl+D
- Report View Ctrl+R
- Engineering Data View Ctrl+E