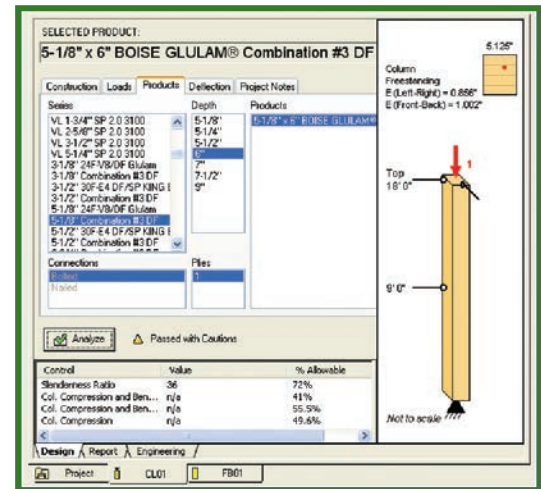
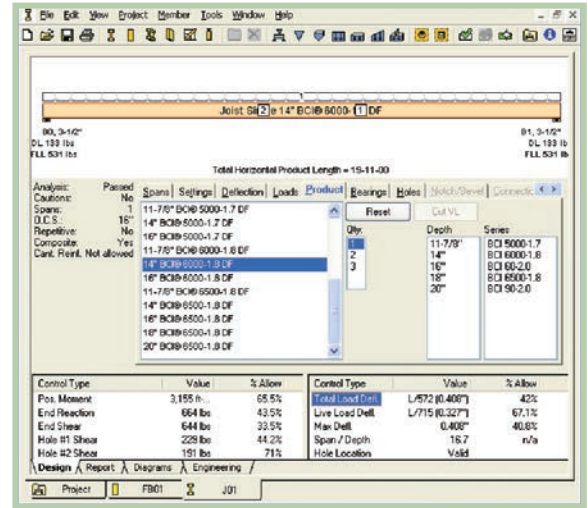


BC CALC[®]

Analysis for Engineered Wood Products

Introducing BC CALC 4.0[®], the latest version of our sizing and analysis program for Boise Cascade Engineered Wood Products.

- BC CALC[®] is simple to use, yet robust enough to analyze most all joist, beam, and column applications. Once an analysis is run, the user may print an easy-to-read design report that displays the span and load information with the analysis results.
- BC COLUMN[®] has now been merged into BC CALC[®], allowing the sizing of joists, beams, rafters, columns, and studs all in one convenient program.
- In addition to BCI[®] & AJS[®] Joists, VERSA-LAM[®], and BOISE GLULAM[®], BC CALC[®] also offers the analysis of solid sawn lumber and timber members. Thus BC CALC[®] is the only program needed to analyze structural wood members.
- Boise Cascade has provided BC CALC[®] free of charge to the design community since 1994.



Reaction Summary (Down / Up/Lift) (lbs)		Live		Dead		Snow		Wind		Roof Live		OC5	
B0, 4"		4,126 / 0		7,044 / 0									
B1, 3-1/2"		4,115 / 0		7,026 / 0									

Load Summary		Load Type		Ref. Start		End		100%		90%		115%		160%		125%	
1	Standard Load			L	00-00-00		33-06-00				15		30				14-00-00

Controls Summary		Value		% Allowable		Duration		Case		Location		Disclosure	
Pos. Moment		30,950 ft-lbs		62.2%		115%		4		16-09-04			Completeness and accuracy of input must be verified by one who would rely on output as evidence of suitability for particular application. Output here based on building code accepted design practices and analysis methods.
End Shear		8,837 lbs		32.2%		115%		4		02-00-00			Installation Guide and applicable building codes. To obtain installation guide or ask questions, please call (800)232-0788 before installation.
Total Load Defl.		L/208 (1.904")		86.5%		n/a		4		16-09-04			Installation Guide and applicable building codes. To obtain installation guide or ask questions, please call (800)232-0788 before installation.
Live Load Defl.		L/330 (1.201")		72.8%		n/a		5		16-09-04			Installation Guide and applicable building codes. To obtain installation guide or ask questions, please call (800)232-0788 before installation.
Span / Depth		19.0		n/a		n/a		0		06-03-00			Installation Guide and applicable building codes. To obtain installation guide or ask questions, please call (800)232-0788 before installation.

Bearing Supports		Dim. (L x W)		Value		% Allow Support		% Allow Member		Material	
B0	Wall/Plate	4' x 7"		11,169 lbs		93.5%		53.2%		Mem/Fir	
B1	Wall/Plate	3-1/2' x 7"		11,142 lbs		n/a		80.6%		Unspecified	

Disclosures:
 For roof members with slope (1/4)/12 or less final design must ensure that ponding instability will not occur.
 For roof members with slope (1/2)/12 or less final design must account for Rain-on-Snow surcharge load.

Notes:
 Design meets Code minimum (L/180) Total load deflection criteria.
 Design meets Code minimum (L/240) Live load deflection criteria.
 Calculations assume member is fully laterally braced.

To Download of BC CALC[®] US,
<http://www.bc.com/wood/ewp/software/bccalc.html>

COMPUTER REQUIREMENTS
 PC with any current version of MS Windows, along with an internet connection.



Included in BC CALC 4.0®

BC CALC®

Analysis for Engineered Wood Products

- Automatic program and database updates with new WebStart program.
- Load combinations per each locale's code requirements, including the 0.75 factor for multiple live load types in the US per ASCE-7.
- Ability to select floor sheathing type and thickness for the composite stiffness analysis of BCI® & AJS® Joists.
- The addition of the KING BEAM® 3000 and BOISE CEDAR GLULAM™ beams & columns.
- Ability to change locales (US, Canada, UK) and languages (French for our Quebec customers) within the program.

COMPUTER REQUIREMENTS

PC with any current version of MS Windows, along with an internet connection.

To Download of BC CALC® US,
<http://www.bc.com/wood/ewp/software/bccalc.html>

Project Manager Window

Designs	Analysis	Cautions	Product	R.Memb.	Total Defl.	Live Defl.	Moment	End React.	Int. React.
F101	New Job...		4" x 14" V-L 3000 DF	1	L/1302 (0.00)	L/1650 (L)	26.5%	-	-
F102	New Job...		3" x 18" V-L 2000 DF	1	L/1415 (0.00)	L/1782 (L)	36.4%	-	-
F01	New Job...		16" BCI 450 DF	1	L/2545 (0.00)	L/2074 (L)	24.8%	37.4%	-
F02	New Job...		16" BCI 500 DF	1	L/1785 (0.00)	L/2226 (L)	26.5%	45.5%	-
F03	New Job...		11" x 11" V-L 3000 DF	1	L/210 (0.00)	L/295 (0.00)	70.9%	-	-
F04	New Job...		11" x 11" V-L 2000 DF	1	L/279 (0.00)	L/337 (0.00)	112.6%	-	-
F05	New Job...		11" x 13 1/2" Glulam 2...	1	L/596 (0.20)	L/765 (0.00)	48.5%	-	-
F06	New Job...		11" x 8" BCI 600 DF	1	L/1077 (0.00)	L/1346 (L)	32.7%	39.7%	-
F07	New Job...		16" BCI 650 DF	1	L/1400 (0.00)	L/2417 (L)	23.6%	42.3%	-
F08	New Job...		14" BCI 450 DF	1	L/829 (0.20)	L/1354 (L)	40.8%	40.5%	-
F09	New Job...		3 1/2" x 14" V-L 3000 DF	1	L/929 (0.10)	L/1547 (L)	28.4%	-	-
F10	New Job...		1 3/4" x 11 7/8" V-L 2000 DF	1	L/155 (0.00)	L/216 (0.00)	107.6%	-	-
F11	New Job...		9 3/4" x 18" Glulam 24F-V-L	1	L/1154 (0.00)	L/2180 (L)	19.5%	-	-

For information about Boise Cascade Engineered Wood Products, including sales terms and conditions, warranties and disclaimers, visit our website at www.BCewp.com



Boise Cascade
Engineered Wood Products

Great products are only the beginning.®

BOISE CASCADE, TREE-IN-A-CIRCLE, AJS, BCI, BC CALC, BC COLUMN, BC FRAMER, BOISE GLULAM, BOISE CEDAR GLULAM, KING BEAM and VERSA-LAM, are trademarks of Boise Cascade, L.L.C. or affiliates.

Copyright © Boise Cascade, L.L.C. 2012

08/30/2012
BC CALC® 4.0 flyer