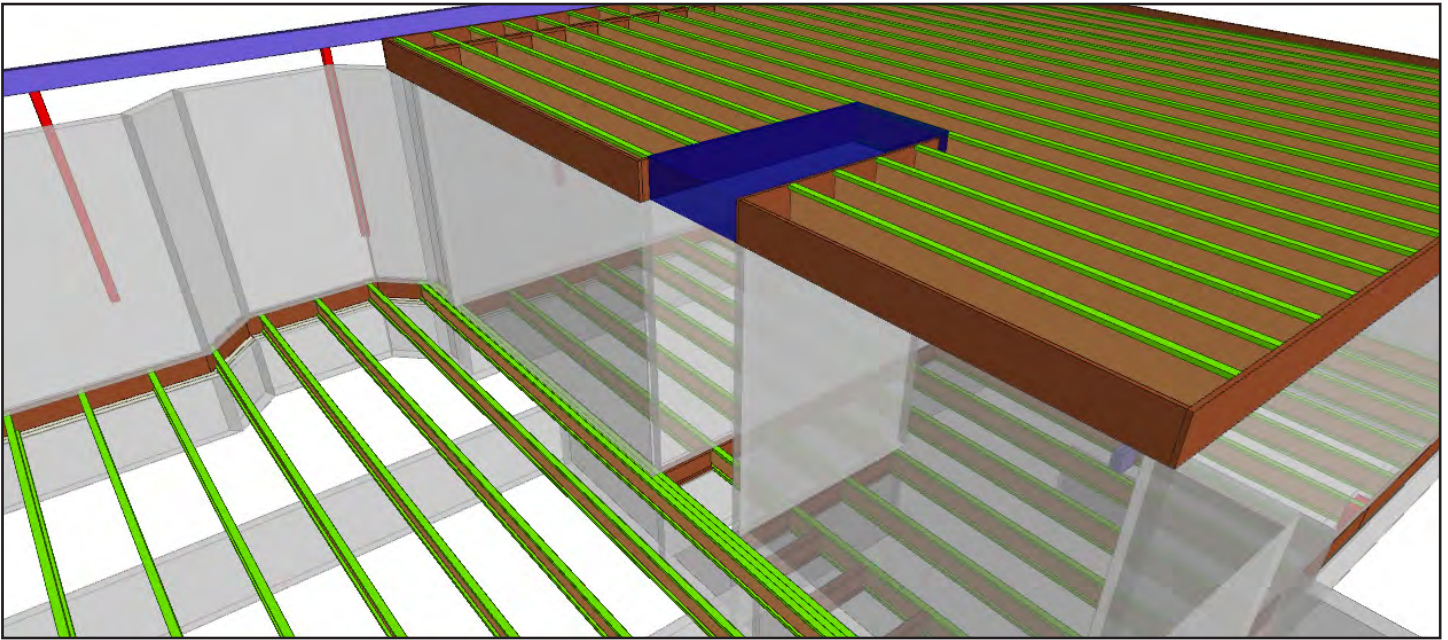


BC FRAMER® JUST GOT A LOT MORE PRODUCTIVE:

INTRODUCING NEXT-GENERATION BC FRAMER® B.A.S.E. FOR BUILDERS, ARCHITECTS, SPECIFIERS AND ENGINEERS.



NOW THE FASTEST, EASIEST WAY FOR BUILDERS, ARCHITECTS, SPECIFIERS AND ENGINEERS TO DESIGN FLOOR FRAMING:

Announcing BC FRAMER® B.A.S.E., a new version of our floor framing software specifically for Builders, Architects, Specifiers and Engineers. BC FRAMER® B.A.S.E. includes everything you need to frame

floors, with many automated features designed to simplify the way you work. And it's available at no charge when you design floors to be built with strong, straight Boise Cascade engineered wood products.

DESIGN FLOORS FAST:

NOW YOU CAN LAY OUT FLOORS QUICKLY AND CORRECTLY. CREATE YOUR OWN FLOOR LAYOUT PLANS AND RETAIN CONTROL OVER THE FLOOR DESIGN PROCESS.

- Useful for fast, basic floor design by homebuilders, architects, specifiers and engineers.
- Create walls and framing containers in one command.
- Quickly add beams and interior walls and frame the floor system in minutes.
- Easily import your CAD files to save time and money. Additionally, you can import PDF or DWF files to trace.
- Export the finished product as DWG or DXF to add to your drawing set.

- Create a complex floor system with all Boise Cascade products, joist hangers and other framing accessories as required.
- A complete material list is quickly established to be added on your layout or as a printed report.
- Shows shape of the walls as solid structures and bearing or non-bearing.
- For bearing walls, shows bearing points.
- Shows load carry-down and distribution for multi-story homes.
- Roof loads are added as line and point loads.



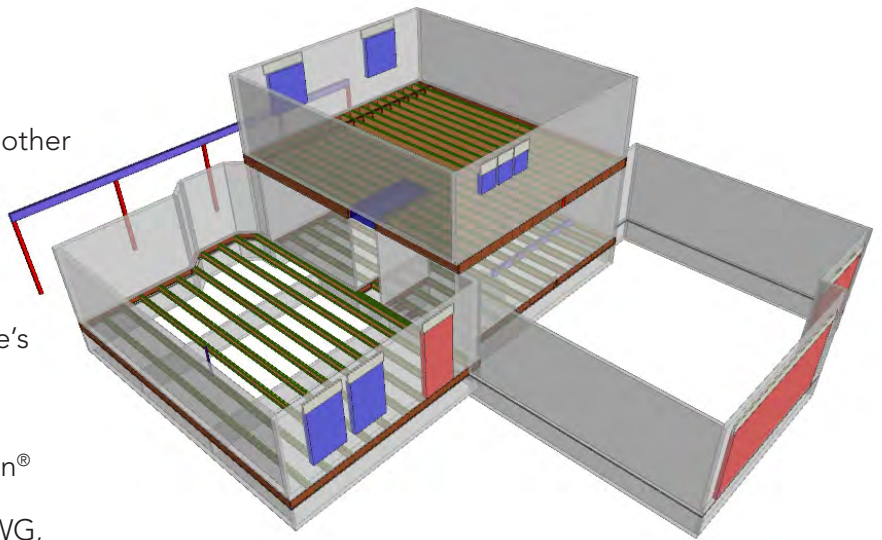
Boise Cascade
Engineered Wood Products

SHRINK DESIGN TIME WITH BC FRAMER® MODEL SHARING:

- Floor/EWP designers can now share files with wall and roof designers and others.
- Design faster by integrating work input by other software users.

SAVE TIME & PREVENT MISTAKES WITH BEST-IN-INDUSTRY FILE INTEGRATION:

- Open architecture supports Boise Cascade's ability to work with you, the customer.
- Can import from or export to MiTek® SAPPHIRE™ Structure.
- Import files directly from Cadsoft®, SoftPlan® and Autodesk Revit®.
- Import and export files using Autodesk DWG, DXF or DWF, import Adobe® PDF files.



DESIGN, "WALK THROUGH" AND CHECK THE PLAN EVERY POSSIBLE WAY WITH FULL 3-D VIEWER:

In the past, manual load carry-down and complex buildings could make loads easy to miss, creating problems that showed up later. New BC FRAMER® B.A.S.E. automatically does full 3-D modeling with automatic load distribution and carry-down throughout the structure.

- You can essentially walk through the structure and see detail of how the job is to be framed.
- Better information and insight lets you work out framing bugs long before framing begins.
- Zoom, pan and rotate in full 3-D to view and check every framing detail.
- May also shorten the approval process by providing such depth of detail.

SAVE STEPS WITH 1 LARGER FLOOR CONTAINER, NOT SEVERAL SMALL ONES:

- 3,000 sq. ft. floor might have required 5 or 6 framing areas in the past.

NOW, MANAGE OPTIONS IN A FRACTION OF THE TIME:

- Easy management of multiple complex building options programs.
- Create a master plan and multiple options that can be quickly selected and exported to a plot-specific file in a few minutes – a fraction of the time it could have taken in the past.
- Rules-based options eliminate selection of options that can't be built together.

CUSTOMIZE PROFESSIONAL OUTPUT OF BC FRAMER® TO FIT YOUR NEEDS:

- Can customize the look/design, colors, logos.
- Option of being very sales-oriented, putting your firm's best foot forward.

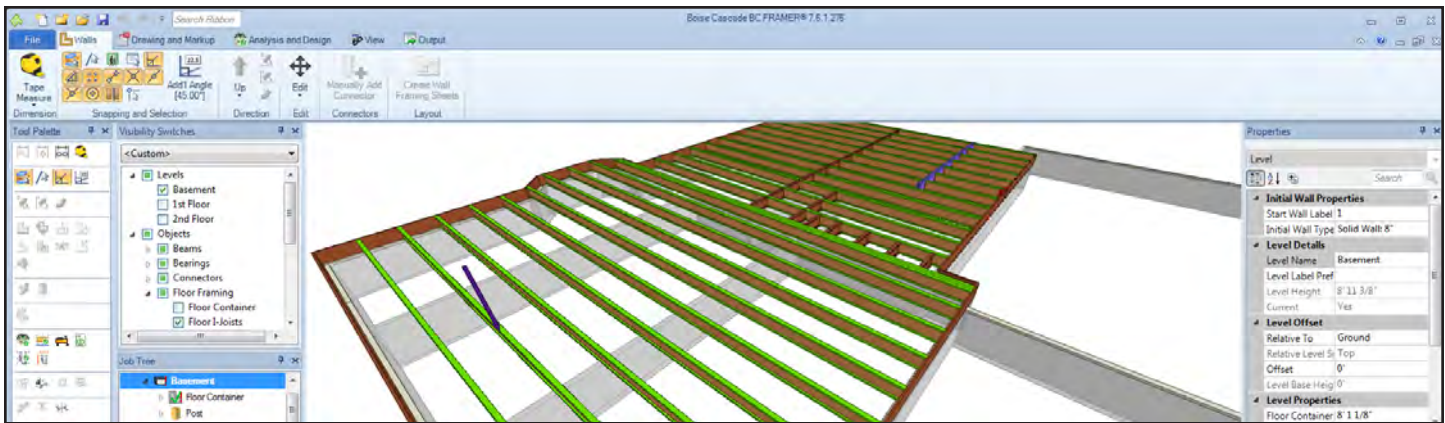
COLLABORATE WITH OTHERS:

DEALERS, DISTRIBUTORS, BUILDERS, ARCHITECTS, DESIGNERS AND ENGINEERS CAN ALL REVIEW FILES:

- Share files with all of the above. They can open the files, review them, make changes if appropriate and return them to you for final review.
- Receive designs or send out your own for review by others.
- View and collaborate. Although you can't change roof and wall framing plans, you can modify the floor plans and solid walls.
- Trade comments in BC FRAMER® files. The Designer can ask questions and send the file to the Architect for review. The Architect can respond and return the file. Comments are

retained in the BC FRAMER® file for future reference and can be hidden so they don't print on the layout that will go to the field.

- Check everything about the design. Answer questions by confirming or denying. Change dimensions if you know they're wrong.
- Works with the new MiTek SAPPHIRE Structure Mobile Viewer, enabling anyone to walk through the framed home, hold up an iPad® to the framed section and compare actual to plan.
- Photograph the framed section side-by-side with the plan with your iPad, send it and quickly resolve questionable framing situations. You can have every job on your device and always be ready to fix problems and resolve issues.



EXERCISE CONTROL OVER YOUR FRAMING:

- Now, you can make sure your framing is exactly what you want it to be.
- Automatically list your preferred brand of connectors – Simpson Strong-Tie® or USP® Structural Connectors.
- Create material and cutting lists as you want them formatted – to 1/16" for P.E.T., or to the nearest foot, or your other preference.
- Download BC FRAMER® B.A.S.E. in minutes. It's available immediately as a free download or by CD if you prefer. The only requirement is approval granted by your Boise Cascade EWP Area Manager.

WORK ON SEVERAL PLANS SIMULTANEOUSLY:

- Open as many plans as your machine and memory will allow.
- Work on multiple plans simultaneously.

LEARN AND BECOME PROFICIENT WITH OUR EDUCATION AND SUPPORT:

- Online training classes are free so you and your people become proficient with the software.
- Available: around 20 hours of online training on BC FRAMER® B.A.S.E. software.
- Personalized training classes: 3-hour user-initiated, customer-focused training sessions designed to answer your specific questions. Topics like how-to-do analysis, how to specify hangers – whatever you and your people want to learn from the sessions.
- Software Support and other instant help is available 24/7/365 on the BC CONNECT® Help Desk and Resource Library. You type in your question and a knowledge-based search finds relevant articles, FAQs and other training aids displayed for your immediate use.

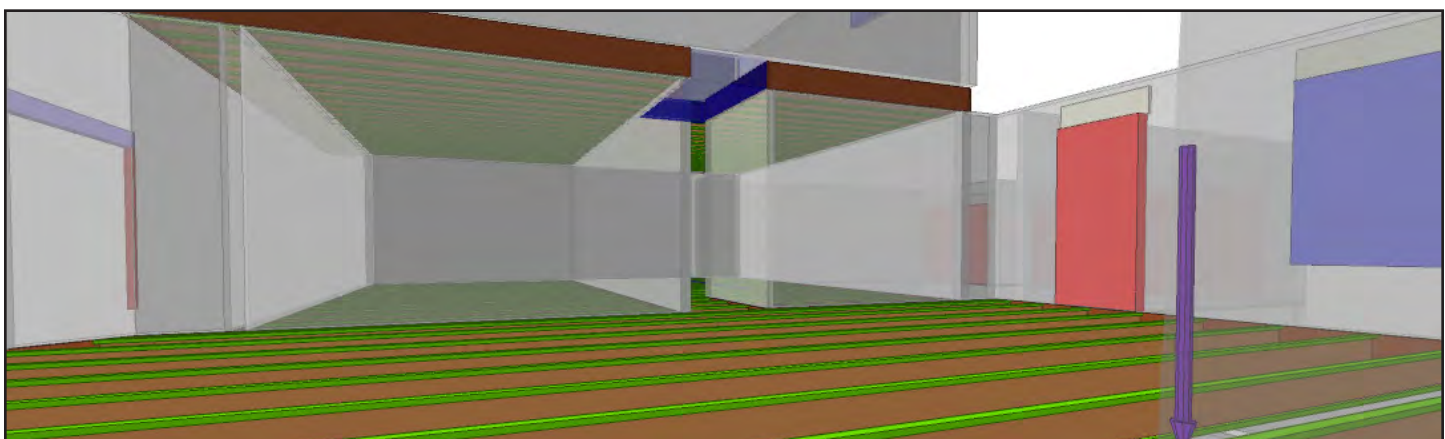
CUT OUT REPETITIVE TASKS:

DELEGATE TASKS TO BC FRAMER® WITH AUTOMATIC DETAIL COMMAND:

- BC FRAMER® can recognize many framing conditions and can place detail images and symbols where needed.
- Software recognizes beams, common building practices, automatically places accessories: Hangers, web stiffeners, backer blocking, X-bracing, rim, bridging, squash blocks.
- Provides usable information on layout sheet – notes, details automatically added by software.

CUT OUT REPETITIVE STEPS WITH PROJECT TEMPLATES:

- Start and finish jobs faster using templates to reduce duplication.
- Customize templates to speed the job by fitting the way you want to work.
- Each member of a local group can be working with the same information.
- Templates can go to workers in remote locations for consistent design and output.



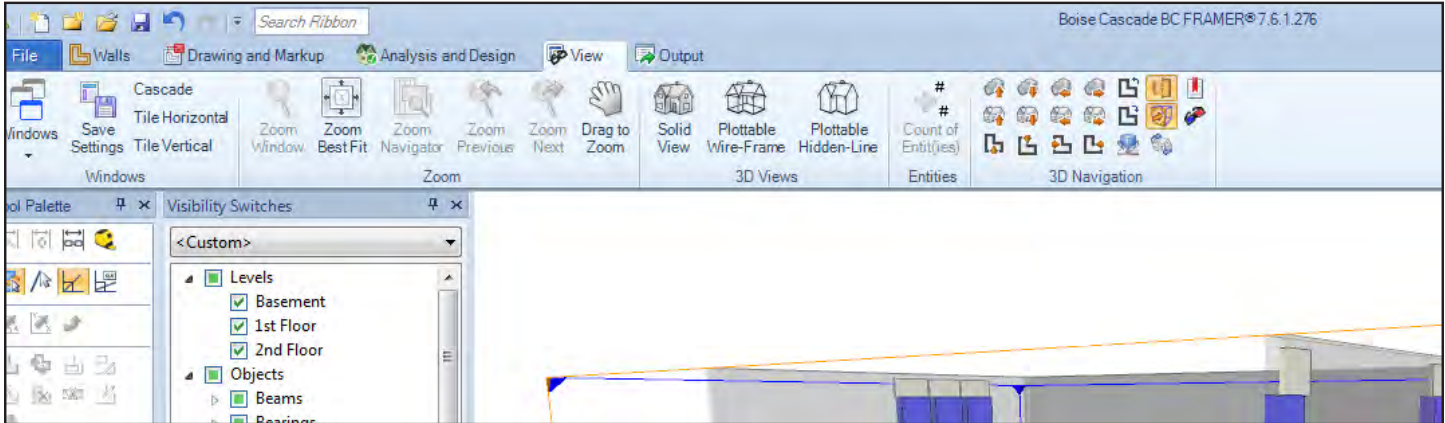
FIND AND USE SHORTCUTS:

SAVE TIME, MAKE MONEY WITH FORMULA-BASED WHOLE-HOUSE ESTIMATING:

- Easily create accurate estimates by applying stored formulas to modeled objects.
- Easier to also bid on other non-floor framing products the company sells.

GRAB AND QUICKLY MOVE WALLS, FLOORS AND ROOFS:

- Change dimensions quickly, in one simple step.
- Pull the plan as needed – BC FRAMER® handles the details.
- Automatically makes necessary adjustments in floor, wall and roof plans and material lists.



WORK FASTER WITH FAMILIAR ICON RIBBONS ACROSS TOP OF SCREEN:

- Ribbon layout places all of your tools in easy-to-use groups.
- Enables designers to start the commands they need quickly.

FIX JUST ABOUT ANYTHING WITH THE MULTI-LEVEL "UNDO" BUTTON:

- Quickly and easily correct mistakes.
- Retrieve what could have been lost data.
- True "Autosave" backup file helps assure you haven't lost anything.

DOUBLE-CHECK FOR PROBLEMS:

AUTOMATICALLY CHECK MODELING WITH MEMBER DESIGN SUMMARY:

- Makes sure the structure is modeled correctly.
- Creates error messages if members need to be redesigned.

VIEW ALL DESIGN RESULTS SIMULTANEOUSLY:

- Lower panel displays all passed, failed or unchecked members together.
- Select members, spells out problems, prints out reports, zooms straight to object.
- Can set up "What-if" scenarios with other products to evaluate options.
- Can accomplish re-design work in less time than in the past.

Label	Design Tag	Member Type	Level	Material	Ply	Flex Moment	Neg Moment	Shear	LL Deflection	TL Deflection	Flex Critical React	Neg Critical React	Col.
✓ F21	6529	Floor Joist	Basement	3-1/2" BC# 6000-1	1	341 @ 25	376 @ 20	407 @ 20	0.07 (L/999)	0.11 (L/999)	511 @ 20 10.3	N/A	21
✓ F21	6527	Floor Joist	Basement	3-1/2" BC# 6000-1	1	351 @ 26	376 @ 20	407 @ 20	0.07 (L/999)	0.11 (L/999)	511 @ 20 10.3	N/A	21
✓ F21	6562	Floor Joist	Basement	3-1/2" BC# 6000-1	1	351 @ 26	351 @ 20	381 @ 20	0.07 (L/999)	0.10 (L/999)	481 @ 20 10.3	N/A	26
✓ F22	6560	Floor Joist	Basement	3-1/2" BC# 6000-1	3	111 @ 26	111 @ 20	141 @ 20	0.05 (L/999)	0.05 (L/999)	181 @ 20 10.3	N/A	61
✓ F23	6565	Floor Joist	Basement	3-1/2" BC# 6000-1	1	371 @ 4	376 @ 10	391 @ 10	0.07 (L/999)	0.10 (L/999)	501 @ 10 8"	N/A	26
✓ F23	6541	Floor Joist	Basement	3-1/2" BC# 6000-1	1	331 @ 4	376 @ 10	391 @ 10	0.07 (L/999)	0.10 (L/999)	501 @ 10 8"	N/A	26
✓ F23	6558	Floor Joist	Basement	3-1/2" BC# 6000-1	1	331 @ 4	376 @ 10	391 @ 10	0.07 (L/999)	0.10 (L/999)	501 @ 10 8"	N/A	26
✓ F23	6568	Floor Joist	Basement	3-1/2" BC# 6000-1	1	331 @ 4	376 @ 10	391 @ 10	0.07 (L/999)	0.10 (L/999)	501 @ 10 8"	N/A	26
✓ F23	6564	Floor Joist	Basement	3-1/2" BC# 6000-1	1	461 @ 20	461 @ 12	491 @ 12	0.15 (L/999)	0.18 (L/934)	581 @ 12 11.1	31 @ 9 6 15/16"	24
✓ F24	6595	Floor Joist	Basement	3-1/2" BC# 6000-1	1	441 @ 20	441 @ 12	461 @ 12	0.14 (L/999)	0.17 (L/873)	561 @ 12 11.1	21 @ 9 6 15/16"	23
✓ F24	6528	Floor Joist	Basement	3-1/2" BC# 6000-1	1	441 @ 20	441 @ 12	461 @ 12	0.14 (L/999)	0.17 (L/873)	561 @ 12 11.1	21 @ 9 6 15/16"	23
✓ F24	6533	Floor Joist	Basement	3-1/2" BC# 6000-1	1	481 @ 9 8"	481 @ 12	491 @ 12	0.17 (L/920)	0.20 (L/793)	721 @ 12 11.1	N/A	24
✓ F24	6531	Floor Joist	Basement	3-1/2" BC# 6000-1	1	481 @ 9 2"	481 @ 12	491 @ 12	0.17 (L/920)	0.20 (L/793)	721 @ 12 11.1	N/A	24
✓ F25	6556	Floor Joist	Basement	3-1/2" BC# 6000-1	1	461 @ 14	441 @ 7 4	461 @ 7 6	0.15 (L/999)	0.18 (L/925)	611 @ 7 4 15/16"	31 @ 0"	24

TO LEARN MORE:

- Email: EWPSupport@bc.com
- Call: 800-405-5969



Boise Cascade
Engineered Wood Products

Great products are only the beginning.®