

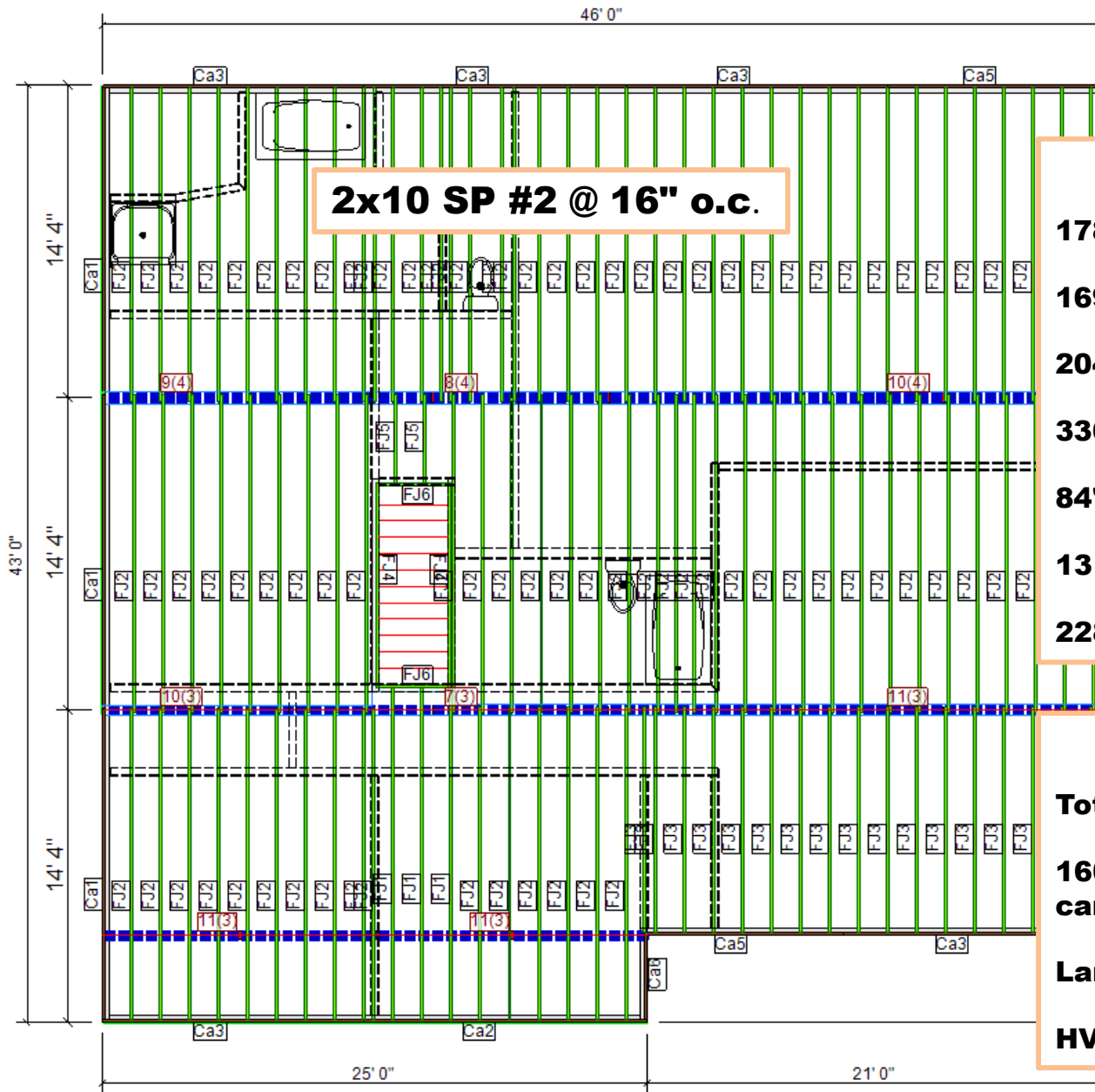


Boise Cascade
Engineered Wood Products

Boise Cascade Engineered Wood Products

EWP vs Dimension Lumber Comparison **Typical 2,000 ft² Residential Floor**

Comparison values based upon an example of a typical 2,000 square foot, single story home using Boise Cascade design software and following current residential building code provisions. Specific information on the example floor framing area is available upon request.



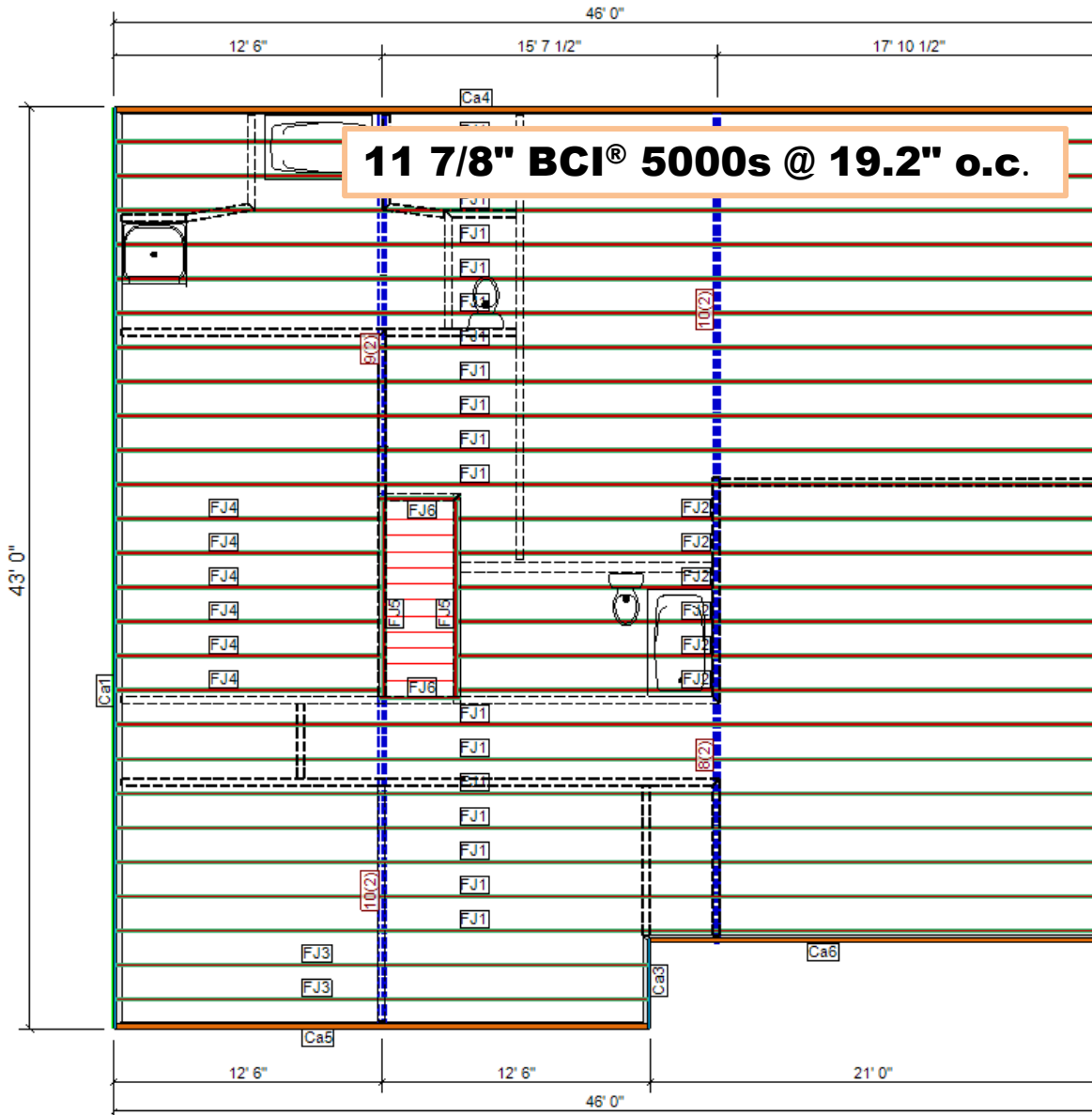
Material List

- 178' 2x10 SP #2 Rim**
- 1696' 2x10x16 SP #2 Floor Joist**
- 204' 2x10x12 SP #2 Floor Joist**
- 336' 2x12x16 SP #2 Dropped Girder**
- 84' 2x12x12 SP #2 Dropped Girder**
- 13 Posts**
- 2289 Nails**

Notes

- Total Load Deflection: L/364 (0.47")**
- 160 Pieces to cut, cull, crown, & carry**
- Largest room in basement: 14'-0"**
- HVAC fur-downs in basement**

**Mid-span bridging is often installed w/ 2x floor joists.
Per section R502.7.1 of the 2015 IRC, intermediate blocking is not required for members 2x12 or smaller.**



Material List

96' 1" x 11 7/8" Rim Board

1256' 11 7/8" BCI® 5000s 1.8 SP

**150' 1 3/4" x 9 1/2" VERSA-LAM® 2.0
3100 SP Dropped Girder**

8 Posts

936 Nails

Notes

Total Load Deflection: L/622 (0.339")

59 Pieces to cut & carry

No pieces to cull or crown!

Largest room in basement: 17'-5"

Can install HVAC ducts flush in floor system...no fur-downs in basement.



2x10 Floor System Material Summary

2078 Lin ft of 2x10

420 Lin ft of 2x12

13 posts

2289 Nails

BCI® Floor System Material Summary

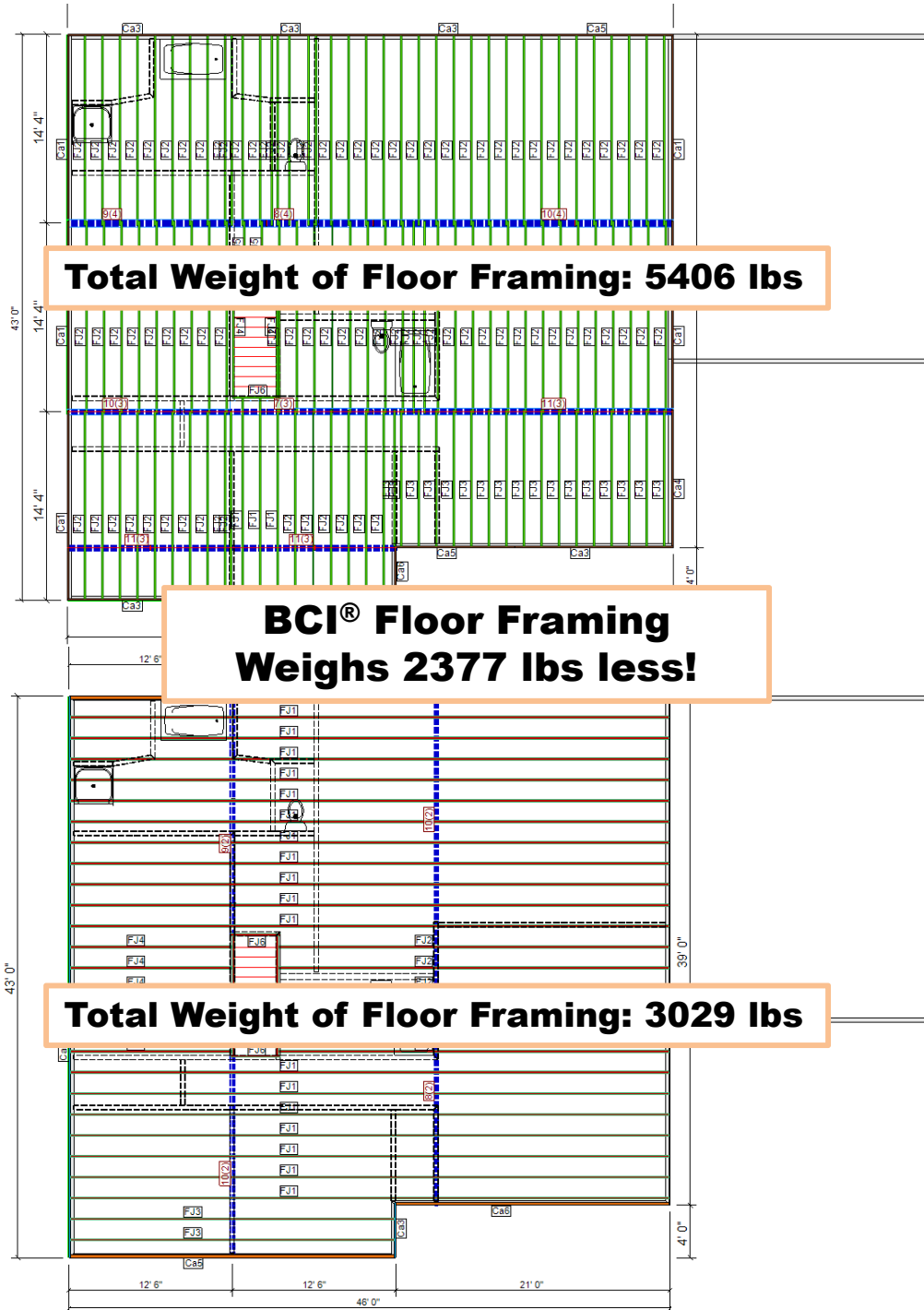
96 Lin ft of 11⁷/₈" Rim Board

1256 Lin ft of 11⁷/₈" BCI® 5000s 1.8 SP

**150 Lin ft of 1³/₄" x 9¹/₂" VERSA-LAM® 2.0
3100 SP**

8 posts

936 Nails



2x10 Floor Performance Summary

Total Load Deflection: L/364 (0.47")

160 Pieces to cull, crown, cut, & carry

Largest Room Size in Basement: 14'-0"

Fur-down ceiling in basement

BCI® Floor Performance Summary

Total Load Deflection: L/622 (0.339") (worst case)

59 Pieces to cut and carry

No pieces to cull or crown

Largest Room Size in Basement: 17'-5"

Flat ceiling in basement